

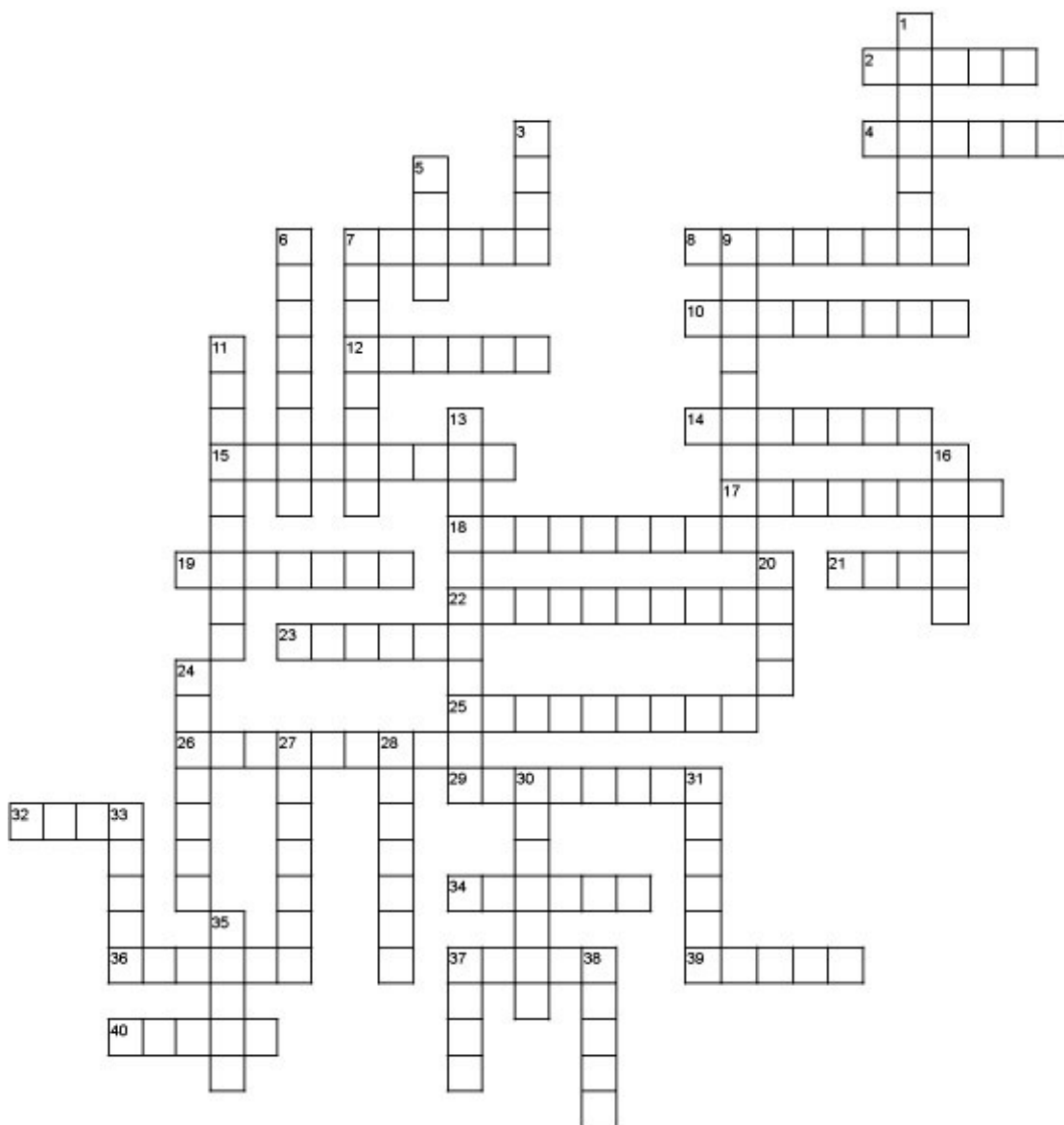
Chrome Hill Geocross V66

No contact geocaching and crossword

Mike Browell May 2022 (mike.browell@btinternet.com)

The 'Ethels' are 95 hills in or on the fringe of the Peak District, mostly over 400 metres height. They were named 'Ethels' in 2021 by the Peak District and Yorkshire Branch of the Council for the Preservation of Rural England, a countryside charity, as a tribute to Ethel Haythornthwaite. Ethel was born into the Sheffield Ward family, daughter of one of the largest industrialists in the Steel City. She was very well connected and passionate about the countryside. She was also well educated and an expert letter writer, and she knew how to use her connections to make things happen. One of her first major achievements was to raise a public appeal to purchase the 747 acre Longshaw Estate which was threatened with development. She bought the property in 1928 and immediately gave it to the National Trust. She continued to campaign for the countryside and championed the establishment of the Peak District as Britains first National Park in 1951.

Over half of the Ethels are long established trig points. Most have public access but a few are on private land. This Geocross links 4 Ethels in the upper Dove valley.



To solve this crossword puzzle you need to visit the 14 locations of the main feature in the following photographs.

You will need the what3words app (W3W) on your GPS device. Using your GPS device held over the main feature you then get the what3words address. You will probably have to move around to find the W3W square containing the 'word' provided.

Save all the words and eventually fit the words to the crossword grid.

There are just three crossword clues. Find these words first, then fit all the other words to the grid. There may be more than one solution. One word may appear twice, you only need it once for the crossword.

Clues

4 ACROSS underground railway

11 DOWN supporting

25 ACROSS Roman fighter

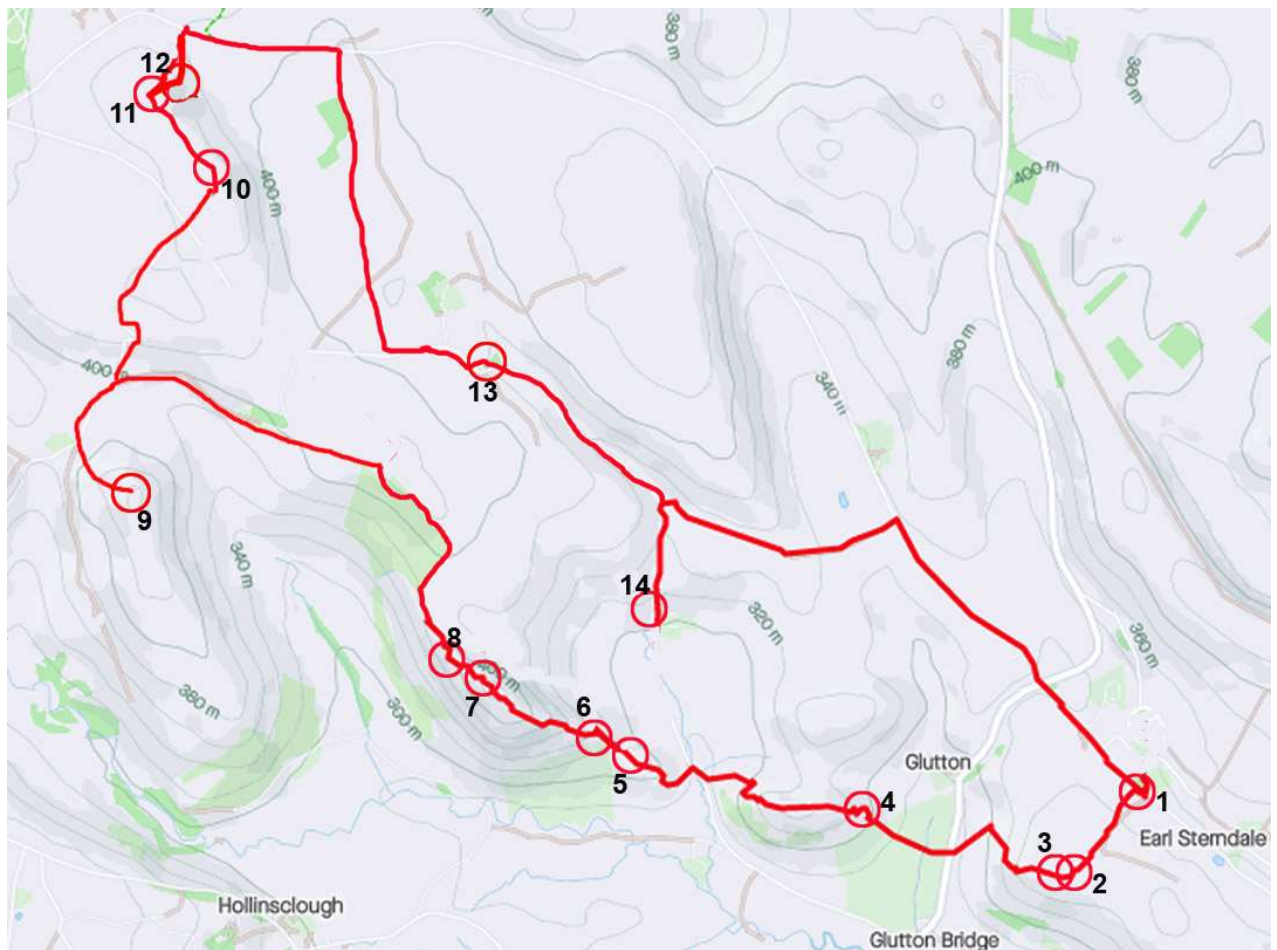
The GPS on mobile phones can be imprecise. This can mean that multiple devices very close to each other might show different 3 word addresses, not because the 3 word addresses of your actual location is different but because the devices each think they are in slightly different places. Each location is a grid square 3x3 metres.

In order to help you ensure that you obtain the correct three word (W3W) address, the first word in the W3W is provided as a clue. You may need to walk around the main feature into different 3 x 3 metre grid squares to find the correct W3W address.

E.g. Let's assume that you are at a location given by the W3W address thick.verge.commented and you are told the first word of the W3W address is the word "thick". You now know you have found the right one.

Location	OS grid reference	W3W		
		First word	Second word	Third word
1	SK 09007 67017	undulation	chapels	upholding
2	SK 08831 66786	boom	implore	butchers
3	SK 08789 66759	vows	jolt	popular
4	SK 07960 66972	into	roughness	deranged
5	SK 07400 67177	building	ownership	anthems
6	SK 06970 67394	shark	hoped	discouraged
7	SK 07064 67345	situated	printers	subway
8	SK 06970 67394	stockpile	compounds	widgets
9	SK 06039 67910	butler	bright	states
10	SK 06092 69053	chairs	mixes	fills
11	SK 06295 68771	geese	trim	shave
12	SK 06166 69066	royally	gladiator	joked
13	SK 07043 68257	shears	depths	cakes
14	SK 07580 67566	fans	suspends	wishing

Each of the locations can be found on the route below. The locations are listed in order and sufficient background is included to help you triangulate your position to identify the location.



Start from Earl Sterndale.

Location 1 OS ref SK 09007 67017

Quiet Woman pub sign

Contains “undulation”



‘SOFT WORDS TURNETH AWAY WRATH’

The pub sign shows a headless woman. Sadly the pub closed a few years ago and shows no sign or re-opening.

The story behind the name might be from the 12th century when a nagging wife, Chattering Charteris, made her publican husband's life a misery. When she started to scold him in her sleep he could no longer tolerate her and cut off her head with an axe. His neighbours were so pleased that he had taken decisive action that they raised money on his behalf, some of which was spent on her headstone, with a warning to all nagging wives carved on it.

Earl Sterndale is itself a quiet place, yet just a few hundred metres away is a 6 kilometre wall of massive noisy limestone quarries. The Peak District National Park boundary follows thje hilltop ridge on the edge of the quarries.

Location 2 OS ref SK 08831 66786

Hitter Hill gate

Contains “boom”

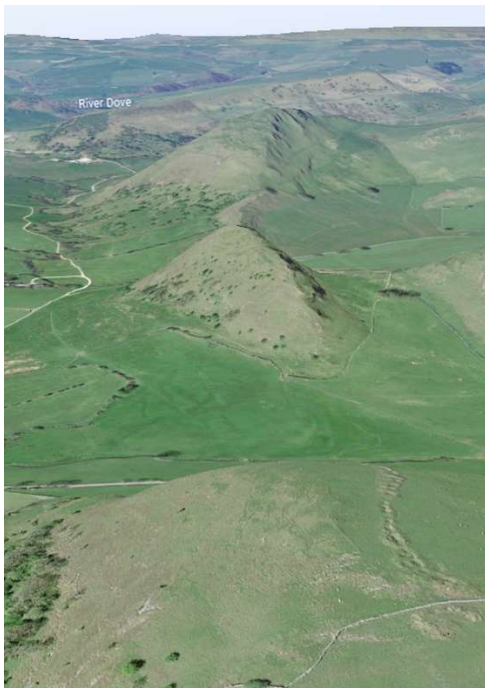


Lots of signs, of which the most important is the Open Country Access Land.

Location 3 OS ref SK 08789 66759

Hitter Hill lead rake

Contains "vows"



The air photo shows a lead rake with a line of pit shafts, possibly 30 or more, heading towards the dramatically sharp ridge of Parkhouse Hill.

The iconic view of Parkhouse Hill and Chrome Hill rising out of the upper Dove valley is one of the most dramatic in the Peak District. It is called The Dragon's Back Ridge, one of the Wonders of The Peak.

Location 4 OS ref SK 07960 66972

Parkhouse Hill summit

Contains "into"



The summits of these two iconic hills are very popular. It is rare to have the place to yourself except on wet or snowy days, when these are potentially dangerous places to visit.

The descent on the north west is precipitous and great care is needed.

Parkhouse and Chrome hills are steep little hills with sharp drops on all sides, limestone reef knoll formations. A reef knoll is a hill of marine calcite shell fossils formed in shallow warm oceans, bound by calcium carbonate. These were laid down over millions of years, long before human life began on earth. The beds have been tilted and thrust up to form a ridge.

Location 5 OS ref SK 07400 67177

Parkhouse Hill view

Contains “building”



The sharp ridge of Parkhouse Hill rears out of upper Dovedale. There is nothing quite like it in the Peak Park.

Location 6 OS ref SK 06970 67394

Dowall Memorial stone

Contains "chairs"



Memorial Stone to Bill Etches of Dowall Hall Farm. The sturdy gritstone farm sits at the foot of Dowel Dale.

Location 7 OS ref SK 07064 67345

Chrome Hill summit

Contains "situated"



Chrome Hill ridge is contorted with several subsidiary summits.

It is broken by several transverse gullies which make routefinding tricky on the descent to the north-west.

Location 8 OS ref SK 06970 67394

Chrome Hill window

Contains “stockpile”



A natural arch which wasn't created by a stream. Likely to be a collapse of a thin fin of limestone.

Location 9 OS ref SK 06039 67910

Hollins Hill summit

Contains “butler”



The tumulus is a raised mound 1.2 metres high, a Bowl Barrow. It is a scheduled Monument

The most common type of funerary monument dating from the Late Neolithic to the Late Bronze Age, 3500 to 4500 years ago. They often are found on prominent hilltop locations.

Location 10 OS ref SK 06295 68771

High Edge south summit machine gun bunker – south side

Contains “geese”



High Edge is unique in the Peak District National Park. It has twin summits, each with a World War 2 machine gun bunker.

The south summit is higher at 472 metres.

1938 to 1969 the RAF Harpur Hill Maintenance Unit looked after an underground ammunitions store in disused limestone quarries in south Buxton. The RAF built these reinforced concrete shelters to protect their base.

High Edge also has good examples of limestone pavement.

In 2000 High Edge became Open Access land after the Countryside Rights of Way Act. Not many people visit.

Location 11 OS ref SK 06092 69053

High Edge North Summit machine gun bunker - south corner

Contains "chairs"



Another limestone pavement, On top of the north summit at 455 metres, another reinforced concrete machine gun bunker. The bunker was build on top of a prehistoric burial cairn.

This 'Ethel' has only had public access for 22 years.

The two derelict concrete bunkers on the two summits of High Edge are interesting for their novelty value, but they really shouldn't be there. They have been unused for 70 years and the RAF surely have an obligation to put the summits back to a natural condition. They are within a National Park!

Location 12 OS ref SK 06166 69066

GPO marker

Contains "royally"



The machine gun bunkers were linked to RAF Harpur Hill by telephone. This small concrete pillar is a General Post Office cable marker, not the sort of feature you expect to find on a rugged hillside.

Location 13 OS ref SK 07043 68257

Owl Cave – cattle grid

Contains “shears”



There are many caves around Dowel Dale, and lead mines dating from the 18th century. Owl Cave is a natural cave at the foot of the rocky depression east of the cattle grid.

Location 14 OS ref SK 06092 69053

Dowel Cave - gate

Contains “fans”



Dowel Cave is a Scheduled Monument.at the foot of the dry valley of Dowel Dale.

It was used in prehistoric times as a shelter, going back at least 11000 years. It has been in continuous use since the Mesolithic Period, through Neolithic, Bronze Age and Roman periods,